

Tasklet Factory ApS

Device Management Agreement

Service Description

Version 1.1

1 SERVICE DESCRIPTION

One of the key elements behind a successful mobility implementation and ongoing support is the ability to manage the mobile devices remotely. Tasklet Factory uses the MobiControl system from SOTI to manage mobile devices. Previously the MobiControl system had to be installed at each customer. This required that a server was allocated and that the system was installed from scratch every time. It also included setting up an SQL Server.

Tasklet Factory can offer a hosted MobiControl solution that is very cost effective and easy to use.

1.1 BENEFITS

Customers get the following benefits from a Tasklet Factory hosted MobiControl solution:

- Remote control of all devices through a web browser**
 This is useful when performing internal training / support. It also allows customers to take screenshots for internal documentation.
- No server installation or maintenance**
 The server is hosted and maintained by Tasklet Factory.
- Instant support**
 By allowing Tasklet Factory to control the mobile devices our support engineers can help users instantaneously and investigate problems as they occur. This saves time and keeps the system up and running.

2 PRICING

2.1 SETUP FEE

The setup fee is €210 and covers the initial configuration of the mobile devices and configuring access to the system.

2.2 YEARLY FEE

The yearly fee for each mobile device connected to the system is €49.

3 INVOICING

The agreement period for a new customer runs from the date the customer orders the agreement to the first 30th of June. After that the agreement period is 12 months starting on the 1st of July. The customer is invoiced for the agreement on the 1st of July every year.

3.1 EXAMPLE

If a new customer orders the agreement on the 14th February the length of the first agreement period is 4½ months. The customer will in this case be invoiced for 4½ months on 14th of February. The customer is subsequently invoiced for a full year on the 1st July every year.

4 TERMINATION OF THE AGREEMENT

The agreement can be terminated with email notification to support@taskletfactory.com at any time. Prepaid yearly fees are not refunded, but the agreement will remain in effect until the prepaid period runs out.

5 PREREQUISITES

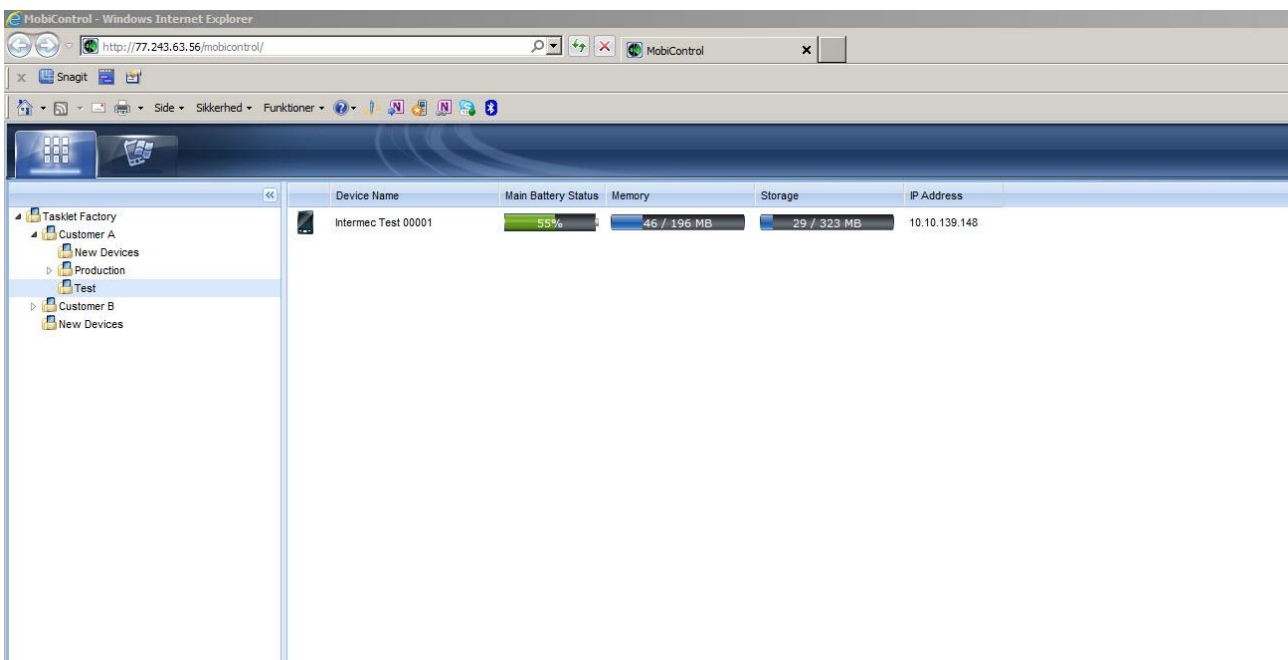
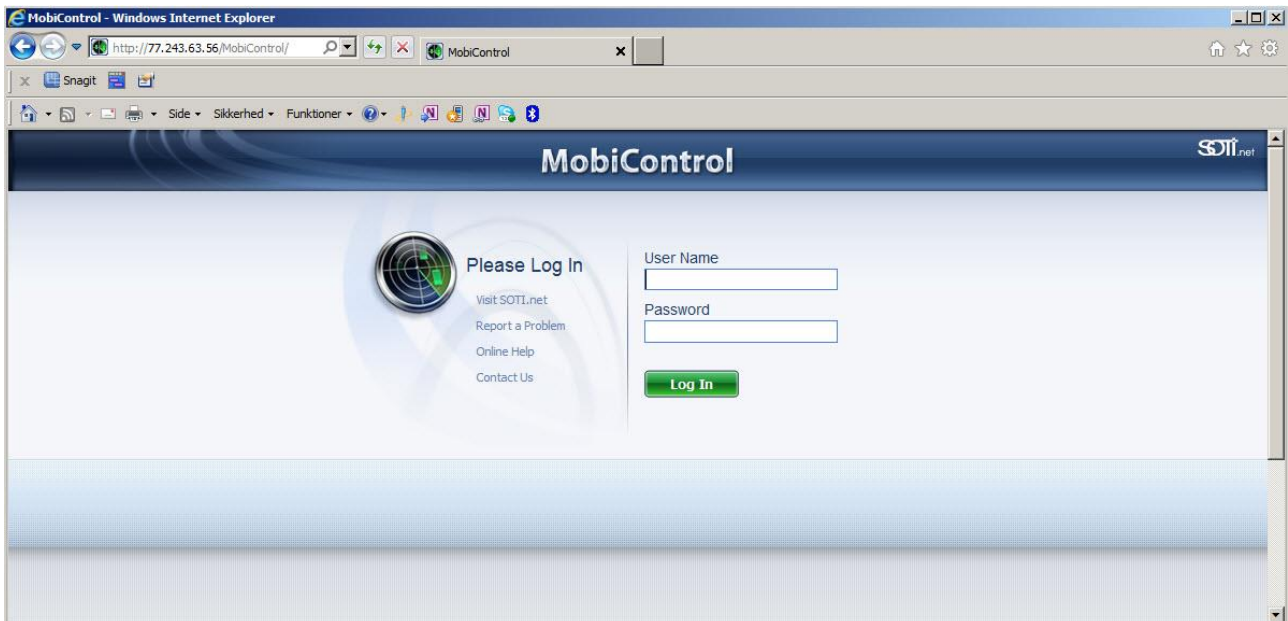
The following prerequisites are required to connect a mobile device to the hosted MobiControl environment. These steps are performed by the customer.

- **The mobile devices must be connected to a wireless network with internet access**
Tasklet Factory will provide a step-by-step manual on how to do this for Intermec and Motorola devices.
- **A MobiControl device agent must be installed on the mobile devices**
The device agent is the program connecting the mobile device to the MobiControl server. This is a program that must be copied to each device. This can be done using a docking station with an USB connection or using a micro SD card. After that the program is executed and that's it. Tasklet Factory will then take over and install the necessary software and get the device ready to use.

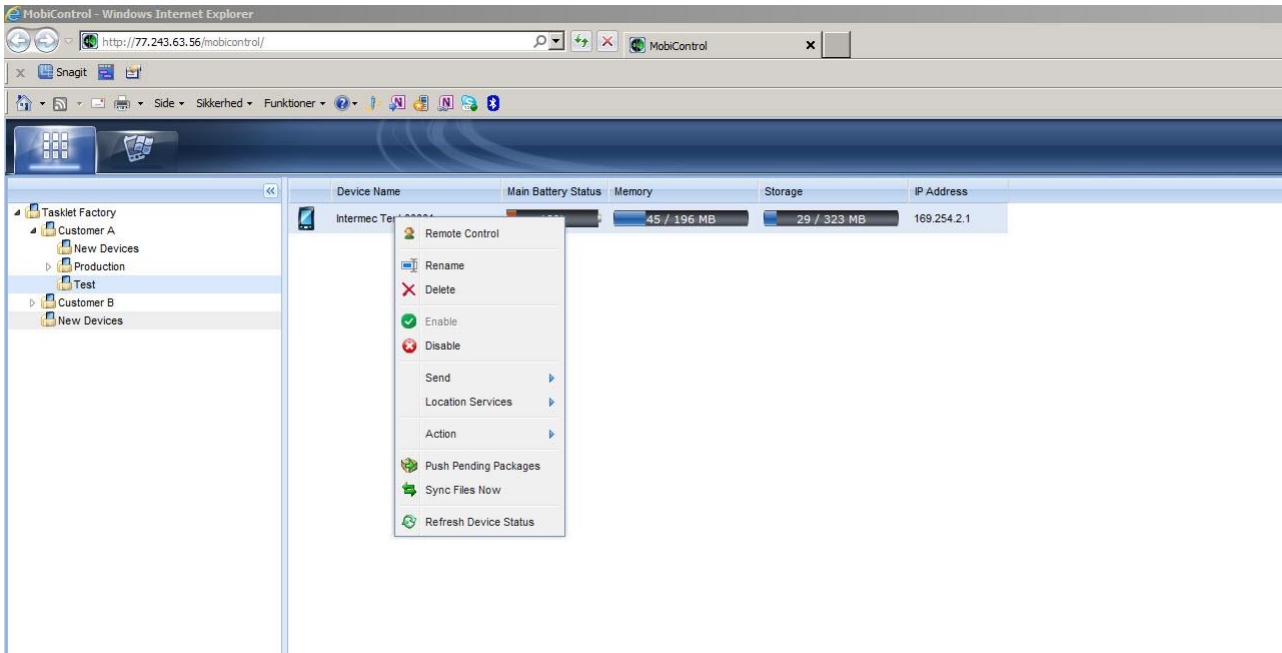
Tasklet Factory will generate the device agent and send it to the customer.

6 SCREENSHOTS

Each customer logs in to a web page and gets access to the mobile devices



Each mobile device can be remote controlled. This is done by simply right clicking the device and selecting “Remote control”.



When remote controlling a device you can use it by clicking the screen. You also have access to the file system of the device. Taking screenshots or even capturing a video is easy.

